

Wireless Network Inventory

- **Accurate integrated records of your network assets & their use**
- **Highly configurable solution**
- **New inventory objects to make Tower Inventory Management more accurate than ever**
- **Make templates from your systems and add them to the PNI Favourites**

Integrated Network Solutions

To manage and plan mobile networks effectively, operators must have an integrated record of all of their network assets and how they are utilised.

Realworld have worked closely with a major mobile operator to define common requirements for a product to meet these needs. The result is Realworld's Wireless Network Inventory (WNI).

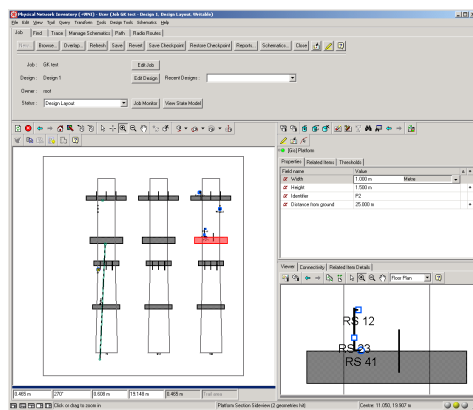
WNI is a highly configurable solution enabling users to model and manage all of their equipment. WNI seamlessly integrates with GE Energy's Physical Network Inventory, enabling:

- Tower Inventory Management
- Radio System Inventory Management
- Physical Capacity Management
- Wireless and Fixed Line Integration

Tower Inventory Management

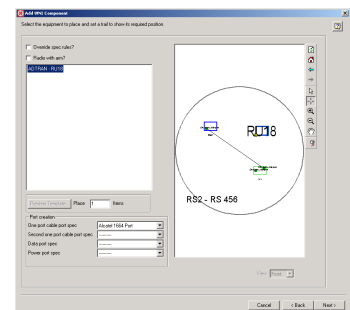
In the real world, Radio Systems can be mounted on a variety of different objects in a variety of different ways.

WNI provides a new set of inventory objects to model this. Users can place building towers and Lattice towers with a variety of different footprints. Building towers include an equipment room to house the standard rack mounted equipment. A new internal view is created for the towers which shows the tower faces and their bearings.



Radio Systems Inventory Management

Radio systems can include a variety of components, including antennae, radio units, splitters and repeaters. Both radio systems and their components are input using the WNI placement wizard.



Radio Systems can be placed on buildings either directly on to mounting spaces on the faces of the building, or else via mounting poles. They can also be placed on mounting spaces on the legs of lattice towers or else again onto mounting poles.

All of the radio system inventory objects have related specification objects. Templates can be made from radio systems and these can also be added to the PNI favourites.

Coverages can also be associated with radio systems and these can be assigned technology types. This enables users to input planned coverage areas and import actual coverage areas to provide a high level view of the network. Faults can also be recorded and associated with coverage areas and devices to aid customer care and operational processes.

Platforms and gantries can be added to these structures, and mounting poles attached to the platforms. These are displayed in the tower face views.

Platforms also have their own internal plan view. This shows the poles, radio systems and their azimuths.

Access points, gantry holes and cable trays can also be modelled, to document how the cables are routed up through the towers and out to the radio systems.



Physical Capacity Management Wireless & Fixed Line

WNI enables the user to manage key resources. Users can track and reserve assignable resources such as mounting spaces on towers and mounting poles, and internal floor spaces. Users can also keep track of the utilisation of key resources, such as power supplies and air conditioning.

Configurable thresholds provide immediate feedback on resource utilisation and provide alerts and warnings as capacity limits are reached. The user can also create reports to aid planning, sales and regulatory requirements.

Information about the utilisation of resources is provided both textually in the object editors, and also graphically. As radio systems are placed, the mounting spaces they utilise are automatically updated to show that they are occupied and are then drawn in red.

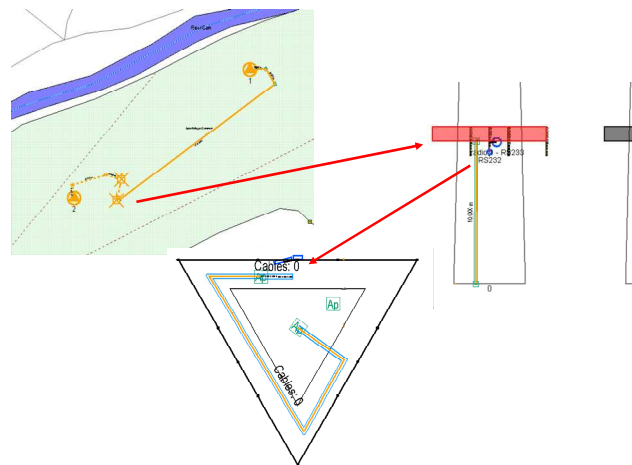
Other resources that can be managed include cable tray occupancy, floor space in the equipment rooms and power utilisation. Resources can be marked as being reserved, available, occupied or unavailable.

Integration

WNI radio systems and radio routes are fully integrated with the standard PNI rack mounted equipment and cable models. The radio units can be connected to standard PNI cables through their ports using standard connectivity tools. Components within the radio system can be connected graphically or else using the connectivity menu.

Radio routes are then used to connect the radio systems at different sites together. The azimuth of the radio system and antennae are automatically reset when the connection is made.

Once the wireless and wire line network have been connected, users can trace the network through the antennae and over the radio routes using the standard PNI tracing tools.



REALWORLD SYSTEMS

United Kingdom, USA & Australia

telephone +44 (0) 1223 532670
 info@realworld-systems.com
 www.realworld-systems.com

Realworld Products for GE Energy's Smallworld™ Application

Realworld Systems specialises in the development of software for enterprise systems such as GE Energy's Smallworld™ product line. Realworld products are all fully supported and maintained. Product releases are scheduled to fit in with the release of GE Energy products to ensure easy upgrade planning. Realworld products are designed and developed with quality, efficiency and usability as top priorities. Documentation and training materials are available for all Realworld products. All products are supplied with installation, user and administration manuals.

Realworld Systems are also able to provide fixed price solutions for the delivery, installation, training and integration of our products.