

Realworld TestRunner

Test GE Smallworld customizations

**Test your
GE Smallworld
Developments and
Upgrades**

September 2007

The Realworld TestRunner offers testers and developers of GE Smallworld applications the possibility to test their software according to predefined scenarios. The scenarios can be used as a test reference after software developments or upgrades of GE Smallworld applications.

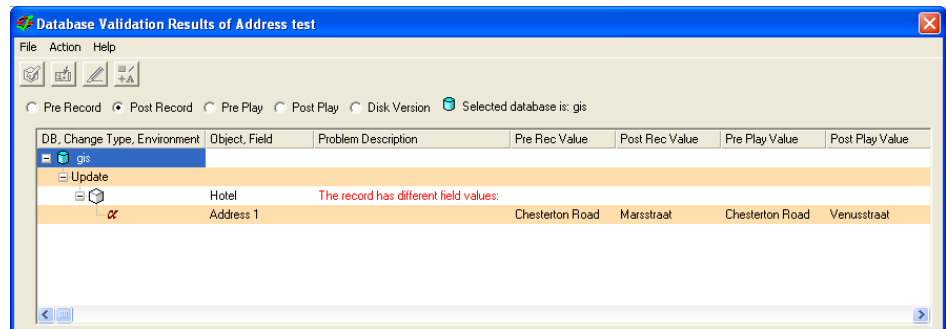
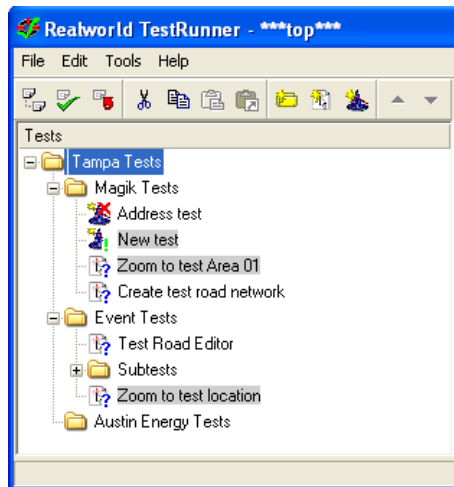
The Realworld TestRunner optimizes testing procedures and makes them transparent to the developer and his customers. The Realworld TestRunner is an essential tool to improve software quality and create quantifiable test procedures.

Features

The Realworld TestRunner allows Smallworld developers and users to define test scenarios that make it possible to compare critical functionality of GE Smallworld applications before and after software customizations or upgrades to guarantee functional and data consistency.

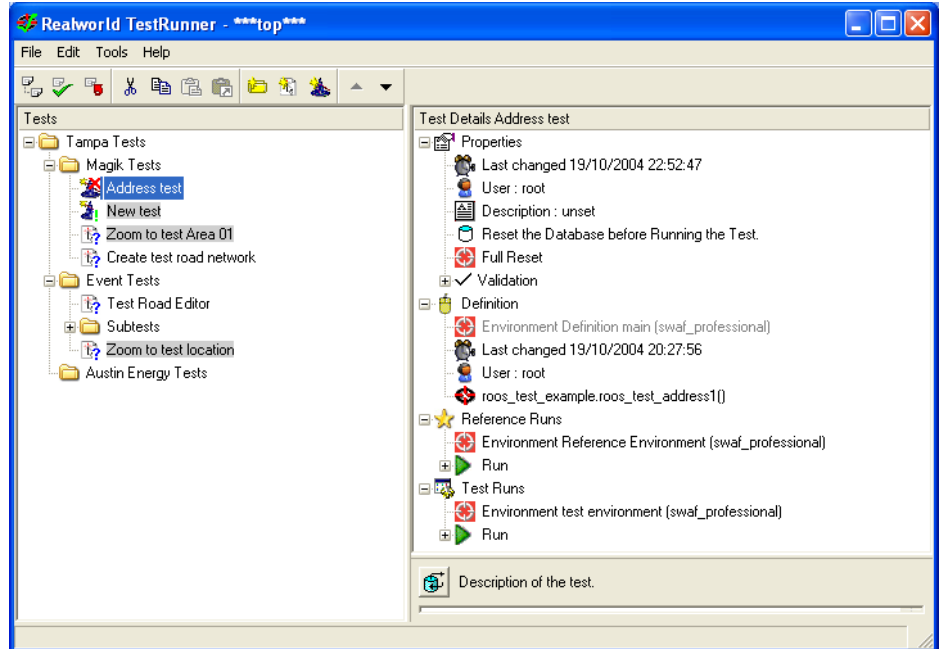
Test scenarios may be created by recording actions during execution or by writing routines in the GE Smallworld development language: GE Smallworld Magik. A development version of the software may be validated against a stable version by either monitoring database changes or graphics changes in a frame or canvas. Failed tests can be explored with tools like:

- A menu that will show the difference between the recordings of database and object changes before and after the software has been changed;
- Another menu showing the differences in graphic results by displaying a picture of the original status next a picture resulting after software changes;
- Tests scenarios that can be grouped and managed within Realworld TestRunner.

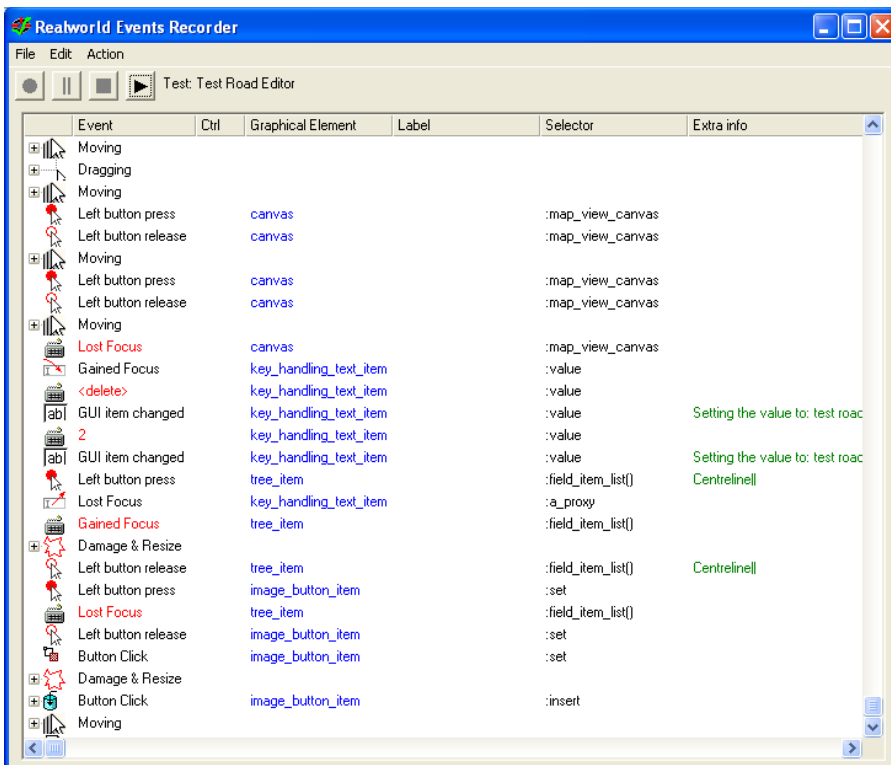


Database Change Validation Menu

Menu to run Test Scenarios



From the Test manager test scenarios can be started, errors are being displayed and described.



Scenario building and running

You can build test scenarios by writing GE Smallworld Magik procedures, but more comfortably you can build them by recording working sessions. A sequence of critical commands and functions can be recorded while working with a Smallworld application. The recorded procedure can be saved and used as a reference procedure for testing of future software releases.

When running test scenarios within the updated GE Smallworld application all steps of the test will be shown and differences in results with the original version of the application will be displayed.

The individual scenario steps can be queried for further information about the differences that occur.